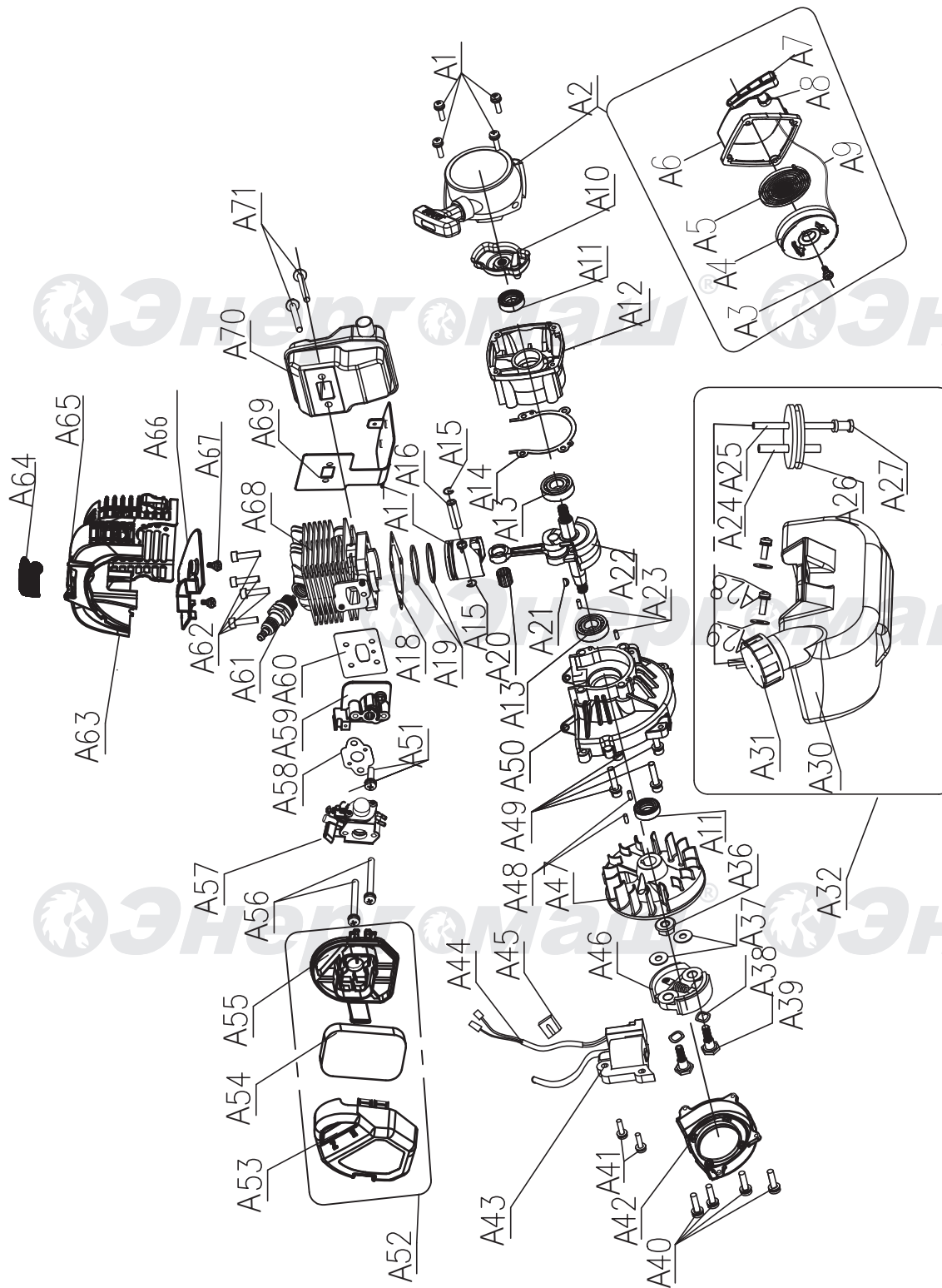


BT-26

NO.	DESCRIPTION	NO.	DESCRIPTION	NO.	DESCRIPTION
A1	GEAR CASE ASSY	A32	CLAMP	A61	HAND GRIP
A2	STOP RING	A33	SCREW M5X20	A62	SPRING
A3	STOP RING	A34	NUT M5	A63	BOX RIGHT
A4	BEARING 6000Z	A35	CLUTCH COMP	A64	SCREW ST2.9X18
A5	PINION	A36	CLUTCH DRUM COMP	A65	SCREW M5X30
A6	STEEL PLATE	A37	STOP RING	A66	CABLE COMP
A7	CAPSCREW M5X20	A38	BEARING 6202	A67	TUBE
A8	WASHER	A39	STOP RING	A68	STOP BUTTON COMP
A10	BOLT M6X12	A40	UNKER	A69	HAND GRIP
A11	WASHER	A41	RUBBER COVER	A70	SPRING
A12	GEAR CASE	A42	SCREW M5X20	A71	BOX LEFT
A13	BLADE COVER	A43	SCREW M5X12	A72	NYLON CUTTER HAND
A14	BEARING 6000Z	A44	STOP RING	A73	CASE
A15	GEAR	A46	CLAMP	A74	LEFT NUT
A16	SHAFT	A47	WIRE CLAMP BAND	A75	WASHER
A17	BEARING6002	A48	HARNESS ASSY	A76	SPRING
A18	STOP RING	A49	BOLT M5X25	A77	NYLON CORD
A19	HOLDER	A50	CAPLOWER	A78	CORD HOLDER
A20	HOLDER	A51	BRACKET	A79	PLATEN
A21	HOLDER	A52	HANDLE	A80	COVER
A24	3T BLADE	A53	GRIP LEFT	A83	SAFETY GUARD
A25	PIPE COMP	A54	CAP OPPER	A84	WASHER
A26	RUBBER COVER	A55	HANDLE	A85	SCREW M5X16
A27	OIL BEARING	A56	LEVER ASSY	A87	GUARD
A28	DRIVE SHAFT	A57	SCREW ST2.9X13	A88	BLADE
A29	PIPE	A58	BUTTON	A89	GUARD ASSY
A30	HOLDER ASSY	A59	SPRING		
A31	HARNESS CLAMP	A60	CLOCK PIN		

BT-26-EX-CTP20220815 VRE1.4



ENGINE FOR BT-26

NO.	DESCRIPTION	NO.	DESCRIPTION
A1	SCREW	A38	WAVE WASHER
A2	STARTER ASSMBLY	A39	SCREW
A3	SCRW M5X12	A40	SCREW
A4	STARTER COIL	A41	SCREW M5X2
A5	STARTER SPRING	A42	SIDE COVER
A6	STARTER HOUSING	A43	IGNITOR
A7	STARTER HANDLE	A44	IGNITOR CORD
A8	BUSH	A45	CORD CLAMP
A9	STARTER ROPE	A46	CLUTCH ASSEMBLY
A10	START PAWL	A47	FLY WHEEL
A11	OIL SEAL $\Phi 12 \times \Phi 22 \times 7$	A48	PIN A4X10
A12	REAR CRANK CASE	A49	SCREW
A13	BEARING 6001	A50	FRONT CRANK
A14	CRANK WASHER	A51	SCREW
A15	CIRCLIP	A52	AIR FILTER
A16	PIN	A53	FILTER COVER
A17	PISTON	A54	FILTER SPONGE
A18	CYLINDER WASHER	A55	FILTER SEAT
A19	PISTON RING	A56	SCREW
A20	NEEDLE BEARING K8X11X11	A57	CARBURETOR
A21	KEY 3X3.7X13	A58	CARBURETOR WASHER
A22	CRANK	A59	AIR TUBE
A23	PIN A4X8	A60	AIR TUBE WASHER
A24	FUEL TUBE	A61	SPARK PLUG
A25	FUEL SUCTION TUBE	A62	SCREW
A26	FUEL SEAT	A63	CYLINDER COVER
A27	FUEL FILTER	A64	SPARK PLUG COVER
A28	SCREW	A65	SCREW
A29	WASHER5X1.5	A66	THERMAL BAFFLE
A30	TANK	A67	SCREW M3X10
A31	TANK COVER ASSEMBLY	A68	CYLINDER
A32	TANK ASSEMBLY	A69	MUFFLE WASHER
A36	NUT M8X1	A70	MUFFLE ASSEMBLY
A37	WASHER 8X16X2	A71	SCREW

BT-26-EX-CTP20220815 VER.1.4